



**CONTROLLED
AIR DESIGN**
controlledairdesign.com

((800) 635-0298
controlledairdesign.com
sales@controlledairdesign.com



AC 100

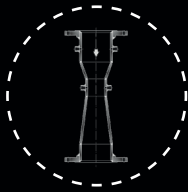
Depureco Industrial Vacuums USA

19121 Marketplace Avenue, Building 1, Suite 165
Plum Creek Business Park • Kyle • TX 78640

www.depurecousa.com
info@depurecousa.com

3720 in²
FILTER

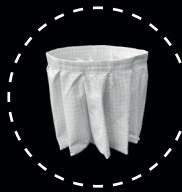
26 gal
CAPACITY



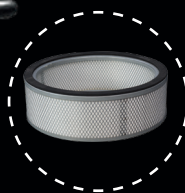
SUCTION UNIT



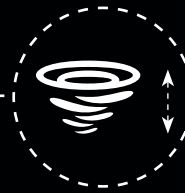
FILTER SHAKER



M CLASS ANTISTATIC STAR FILTER



[OPTIONAL] FILTER CARTRIDGE HEPA H14



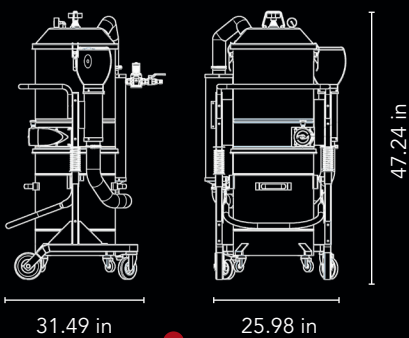
TANGENTIAL INLET WITH CICLONE SYSTEM

POWDER COATED STEEL BIN

26gal

HIGHLY TRANSPORTABLE

DETACHABLE BIN



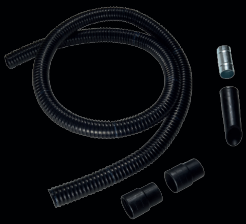
Weight: 145 lbs



SPEC SHEET

	Units	AC100 Z22
Suction type		Venturi pipe
Pressure required	inH2O	2500-3000
Maximum vacuum	inH2O	200
Maximum air flow	CFM	282.51
Inlet	Ø in	3.15
Noise level - (EN ISO 3744)	dB(A)	70
Bin capacity	gal	26
Dimensions	in	25.98 x 31.49
Height	in	47.24
Weight	lb	145
Primary filter		
Type		Star filter
Surface area	in ² in	3720
(Class EN 60335-2-69)		M Class
Media		Polyester
Filter cleaning		Filter shaker
Absolute filter - Optional		
(Class - EN 1822)		H14
Media		Fiberglass
Surface aerea	in ²	Opt H14

ACCESSORIES



ATEX STARTER KIT
Ø 1.75 in



ATEX KIT PRO
Ø 1.75 in

OPTIONAL



GX
AISI 304 BIN AND CHAMBER



PTFE ANT
Antistatic PTFE filter
EN 60335-2-69



H 14
Absolute filter
EN 1822-5