

CONTROLLED AIR DESIGN
RALEIGH, NC
(800) 635-0298
CONTROLLEDAIRDESIGN.COM




DF
22
NFPA


Depureco Industrial Vacuums USA


19121 Marketplace Avenue, Building 1, Suite 165
Plum Creek Business Park • Kyle • TX 78640

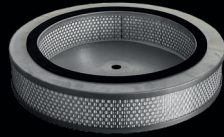
www.depurecousa.com
info@depurecousa.com



3 HP

POWER

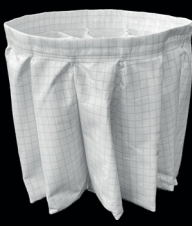
3800 in²

FILTER

17/26 gal Bin

CAPACITY



OPTIONAL
H13 Absolute filter
18.600 in²

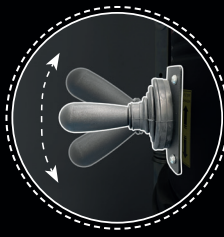
ELECTRICAL FAN
480V
Max Airflow= 470 | 589 | 824 CFM



ANT M
Antistatic star filter



3800 in²



MANUAL SHAKER CLEANING SYSTEM

Smart handle for shaking the filter aggressively to release dust.

DETACHABLE STAINLESS STEEL CONTAINER



17/26 gal



ALL COMPONENTS ARE GROUNDED

GX
Stainless steel construction for Bin and vacuum chamber

STAINLESS STEEL SUCTION ARM

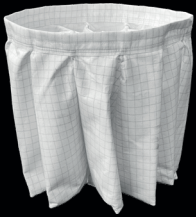
Articulated suction arm to extract airborne dust directly at the source



SPEC SHEET

Motors Type		DF 22	Fan
Power	HP		3
Voltage Frequency	V Hz		480/60
Maximum vacuum	inH2O		13.8 13.8 13.8
Maximum air flow	CFM		470 589 824
Inlet	Ø in		3.94 4.72 5.90
Noise level - (EN ISO 3744)	dB(A)		73
Bin capacity	gal		17/26
Dimensions	in		25.98 X 31.50
Height	in		64
Weight	lb		264
Primary filter			
Type			Star filter
Surface area Diameter	in² in		3800
(Class EN 60335-2-69)			M Class
Media			Antistatic Polyester
Filter cleaning			Manual
Absolute filter (optional)			
Surface area	in²		18,600
(Class - EN 1822)			H13
Media			Fiberglass

SPARE FILTERS



ANT M
Antistatic star filter

OPTIONAL



26 GAL
Bin with 26 gal capacity

ACCESSORIES



FLANGED CONE CONNECTION