

Controlled Air Design, LLC
PO Box 90192
Raleigh, NC 27675
www.controlledairdesign.com
P:(800) 635-0298 F(984)204-7755





XM TORCH

Depureco Industrial Vacuums USA

19121 Marketplace Avenue, Building 1, Suite 165
Plum Creek Business Park • Kyle • TX 78640

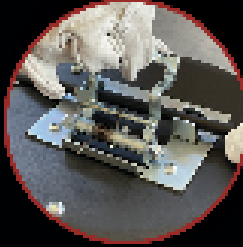
www.depurecousa.com
info@depurecousa.com

1.1 to
2.7 HP

POWER

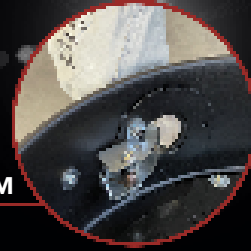
5500 in²

FILTER

5 gal Bin

CAPACITY



**WELDING DETECTOR FOR
AUTOMATIC START AND STOP**



**JET CLEAN FILTER
CLEANING SYSTEM**



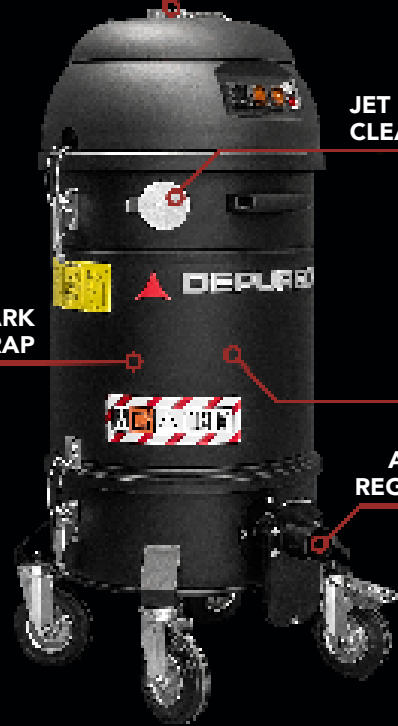
**SPARK
TRAP**



**M CLASS
CARTRIDGE FILTER**



**AIRFLOW
REGULATOR**



SPEC SHEET

	Units	XM TORCH 1M	XM TORCH 2M
Code		A1452/US	A1450/US
Motors Type		1x By-Pass	2x By-Pass
Power	HP	1.3 1~	2.7 1~
Voltage Frequency	V Hz	120 60	120 60
Vacuum in continuous run	inH2O	94	94
Max Air flow	CFM	115	230
Flow regulator		Included	Included
Remote control		With ground cable	With ground cable
Inlet	Ø mm	50	50
Noise level	dB(A)	72	72
Bin capacity	gal	5	5
Dimensions	in	21.02 x 18.54	21.02 x 18.54
Height	in	39	39
Weight	lb	79	84
Primary filter		Cartridge	Cartridge
Surface	in ²	5500	5500
(Class EN 60335-2-69)	IFA BGIA	Class M	Class M
Media		PTFE Coated	PTFE Coated
Filter cleaning		Jet Clean	Jet Clean
Guillotine for Jet Clean		Included	Included
Anti-spark safety filter		Included	Included

OPTIONAL FILTERS



MAIN HEPA FILTER
H13



ADDITIONAL HEPA FILTER
H14

OPTIONAL

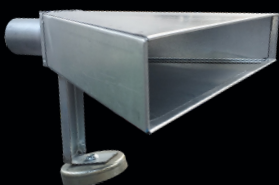


GRD
Grounding

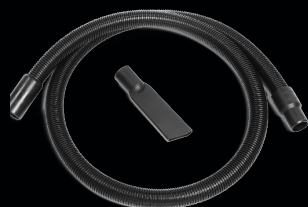


BX
AISI304 Stainless steel bin

ACCESSORIES



Magnetic suction hood



Starter Kit
Ø 40 mm



Dry Kit
Ø 40 mm